

**Appendix 3: Rushcliffe Local Plan Policies Map
(final version)**

Contents

Policies Map West

Policies Map East

Bingham Inset 1

Bingham Inset 2 (District Centre)

Bradmore

Bunny

Cotgrave Inset 1

Cotgrave Inset 2 (Local Centre)

Cropwell Bishop

Cropwell Butler

East Bridgford

East Leake Inset 1

East Leake Inset 2 (Local Centre)

Flintham

Gotham

Keyworth and Stanton on the Wolds Inset 1

Keyworth Inset 2 (Local Centres)

Radcliffe on Trent Inset 1

Radcliffe on Trent Inset 2 (Local Centre)

Ruddington Inset 1

Ruddington Inset 2 (Local Centre)

Shelford

Sutton Bonington

Tollerton and Plumtree

Upper Saxondale

West Bridgford

West Bridgford District Centre

Strategic Allocation at East of Gamston/North of Tollerton






Strategic Allocation at Former RAF Newton

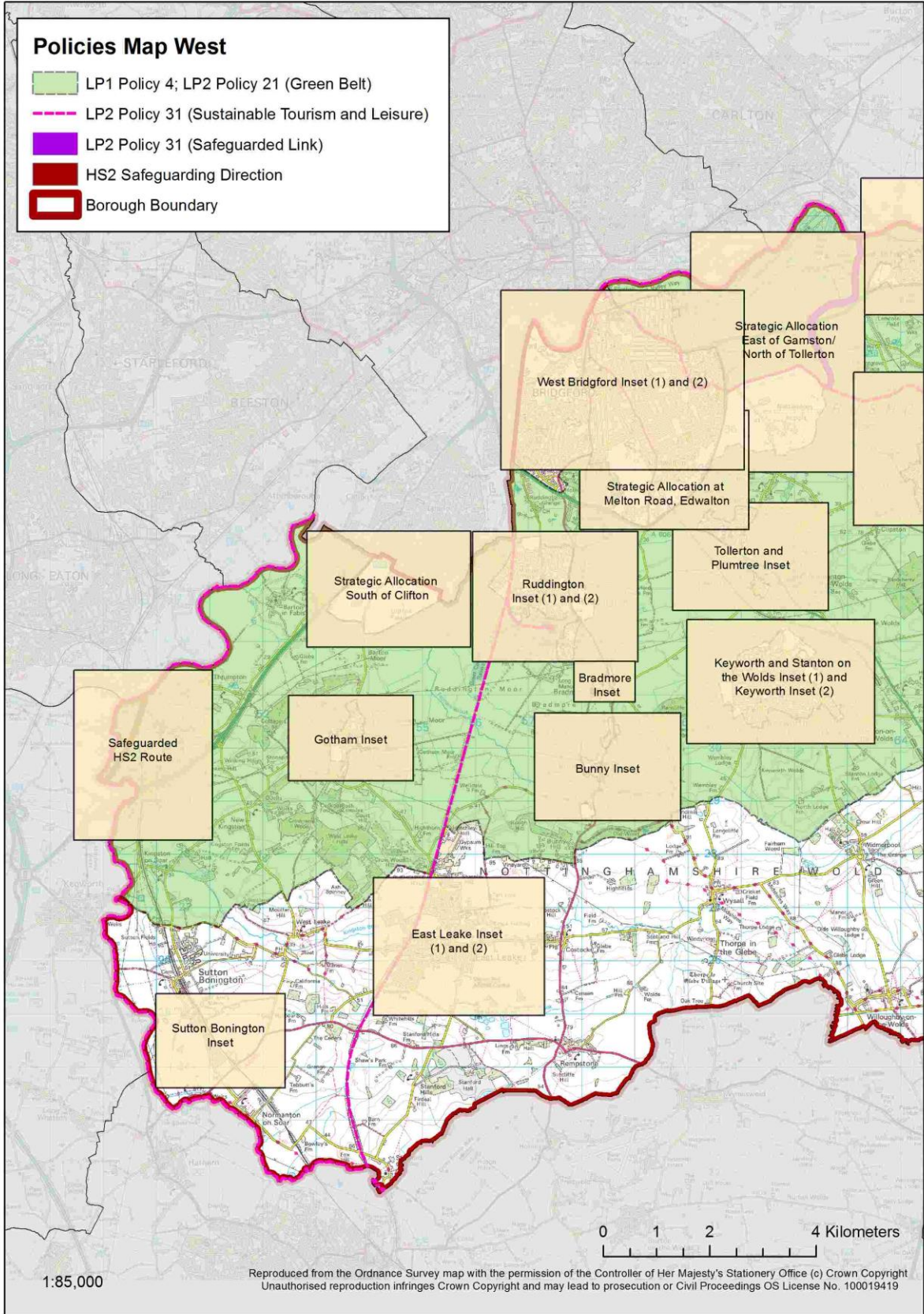
Strategic Allocation at Melton Road, Edwalton

Strategic Allocation South of Clifton

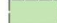



HS2 Safeguarded Route

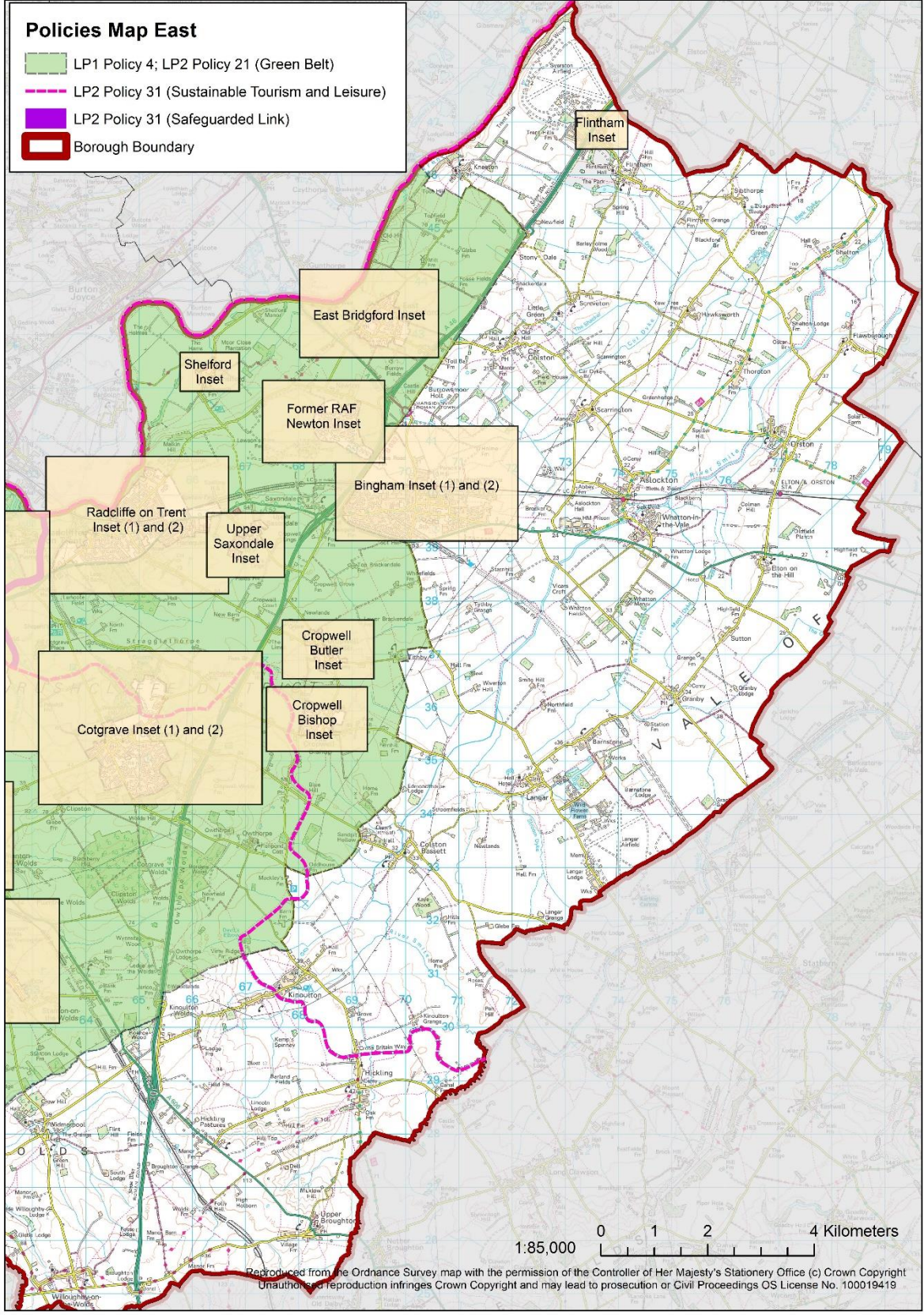
Policies Map West

-  LP1 Policy 4; LP2 Policy 21 (Green Belt)
-  LP2 Policy 31 (Sustainable Tourism and Leisure)
-  LP2 Policy 31 (Safeguarded Link)
-  HS2 Safeguarding Direction
-  Borough Boundary

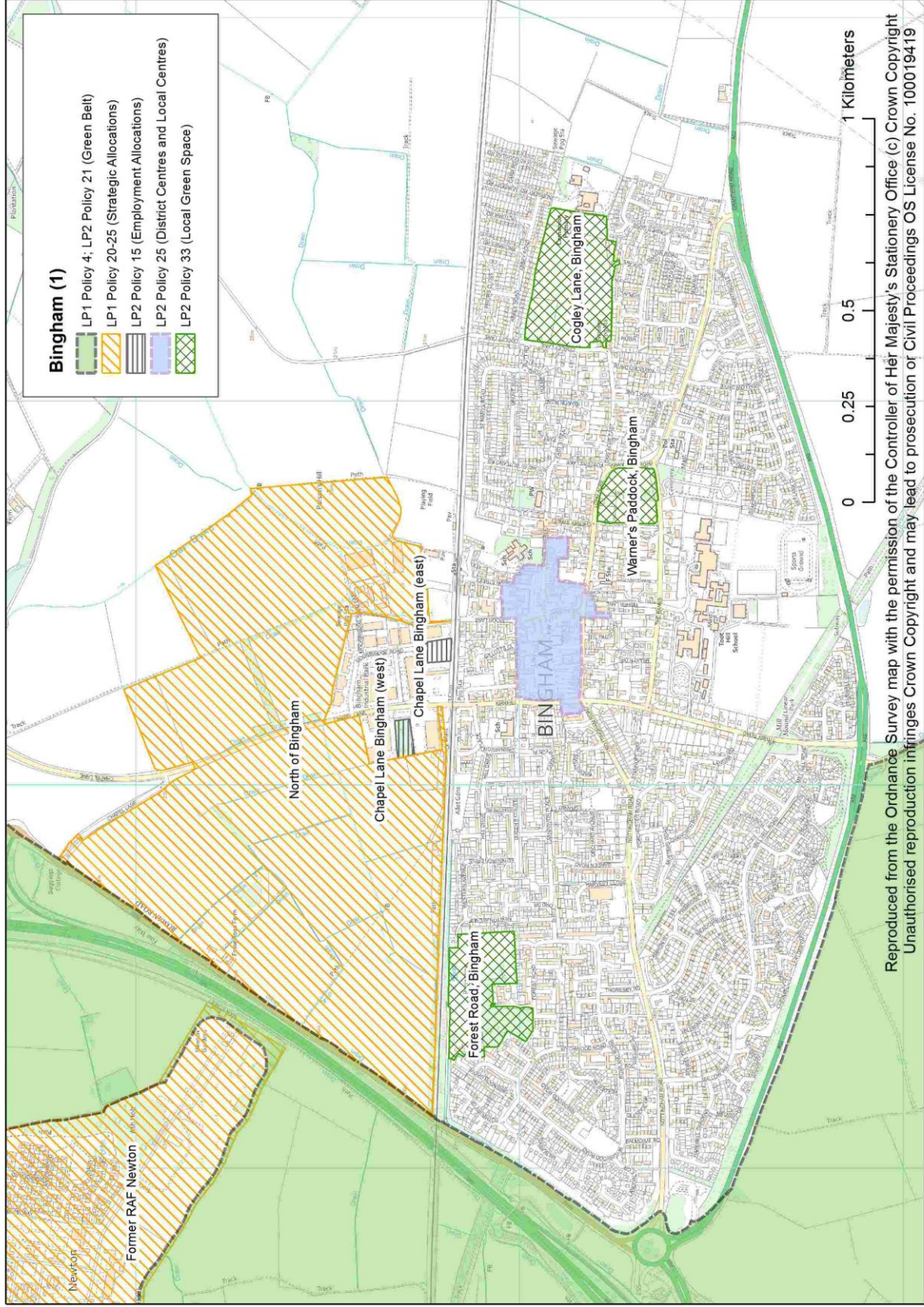


Policies Map East

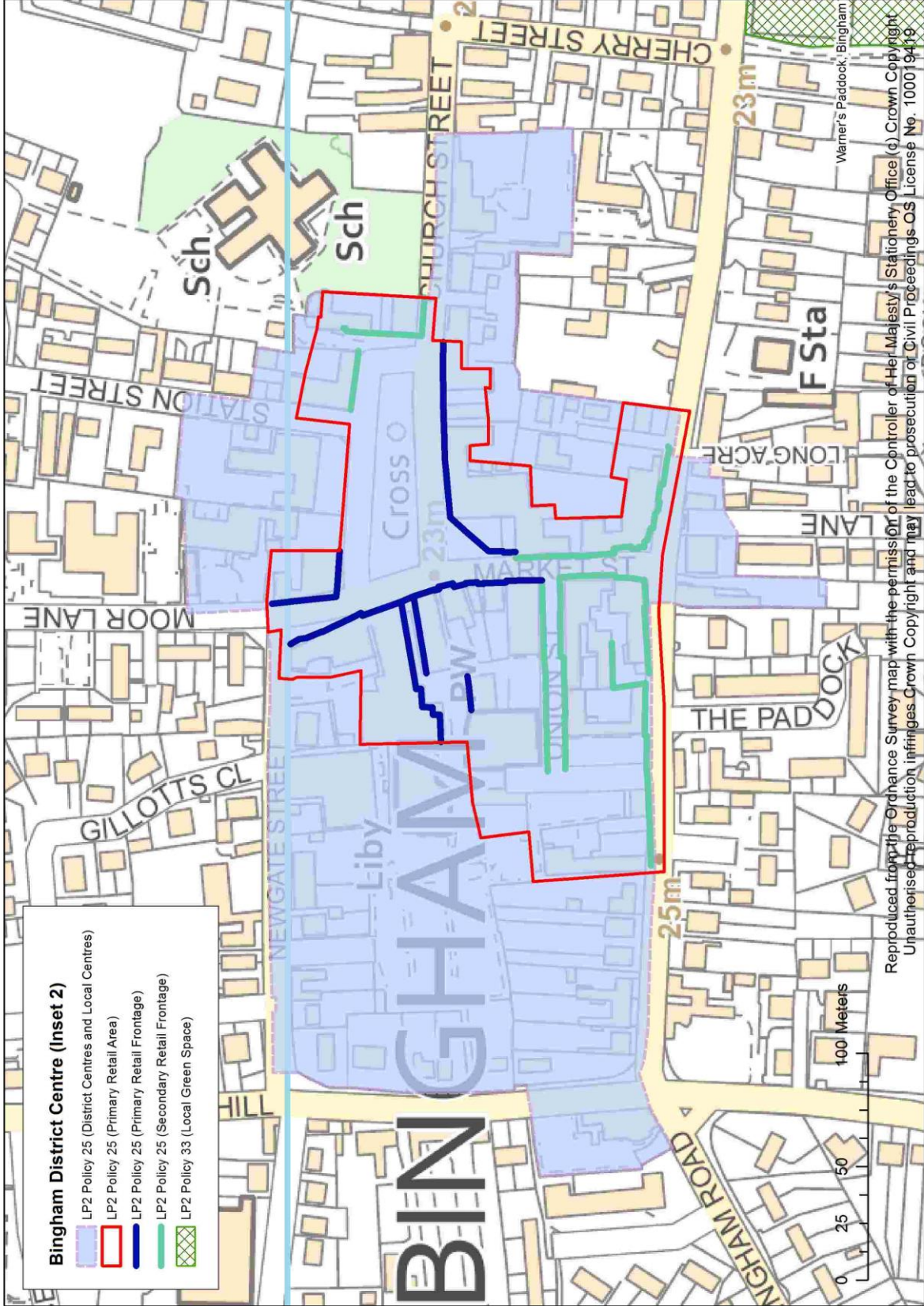
-  LP1 Policy 4; LP2 Policy 21 (Green Belt)
-  LP2 Policy 31 (Sustainable Tourism and Leisure)
-  LP2 Policy 31 (Safeguarded Link)
-  Borough Boundary



Reproduced from the Ordnance Survey map with the permission of the Controller of Her Majesty's Stationery Office (c) Crown Copyright. Unauthorised reproduction infringes Crown Copyright and may lead to prosecution or Civil Proceedings OS License No. 100019419



Reproduced from the Ordnance Survey map with the permission of the Controller of Her Majesty's Stationery Office (c) Crown Copyright
 Unauthorised reproduction infringes Crown Copyright and may lead to prosecution or Civil Proceedings OS License No. 100019419



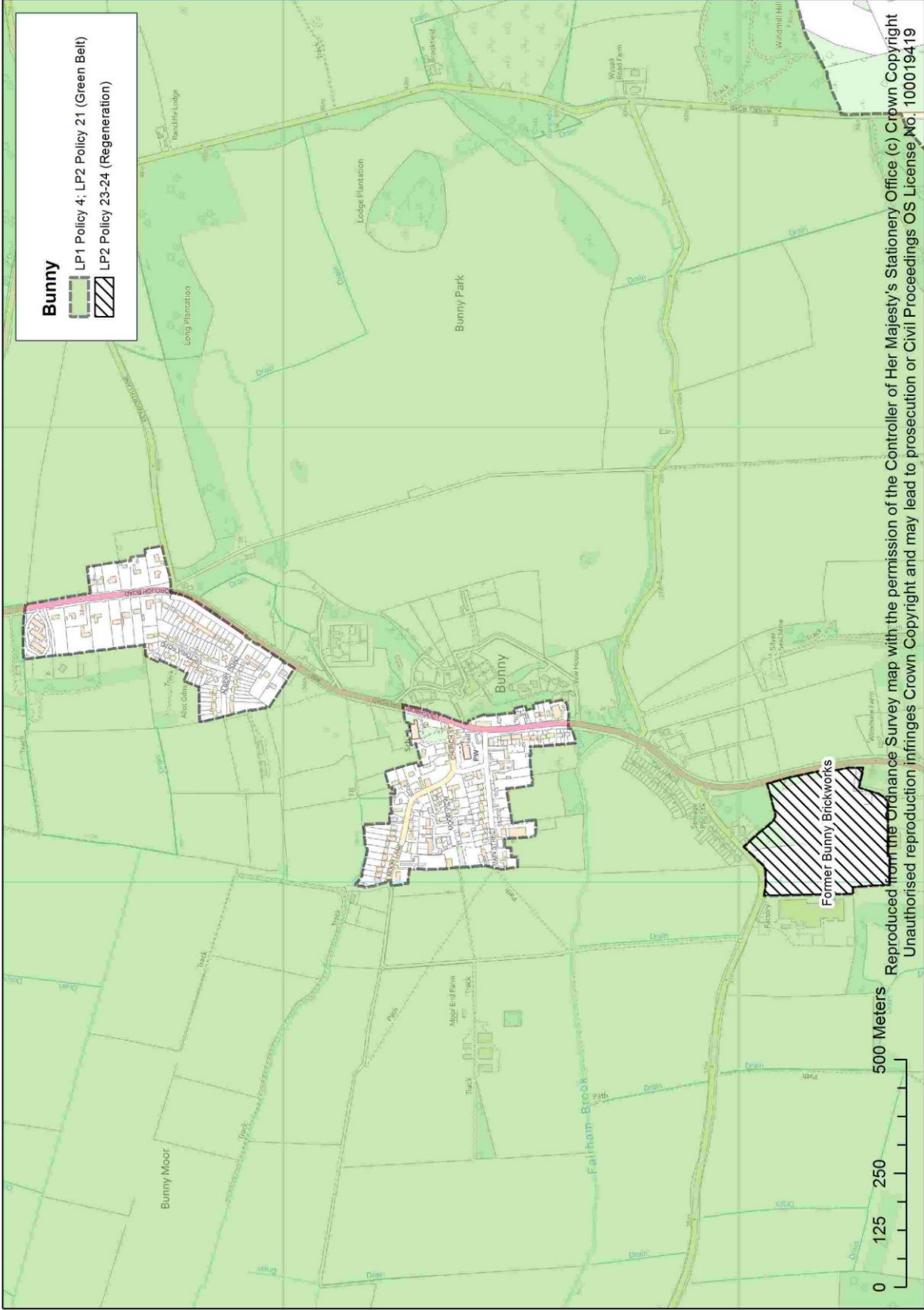
- Bingham District Centre (Inset 2)**
- LP2 Policy 25 (District Centres and Local Centres)
 - LP2 Policy 25 (Primary Retail Area)
 - LP2 Policy 25 (Primary Retail Frontage)
 - LP2 Policy 25 (Secondary Retail Frontage)
 - LP2 Policy 33 (Local Green Space)

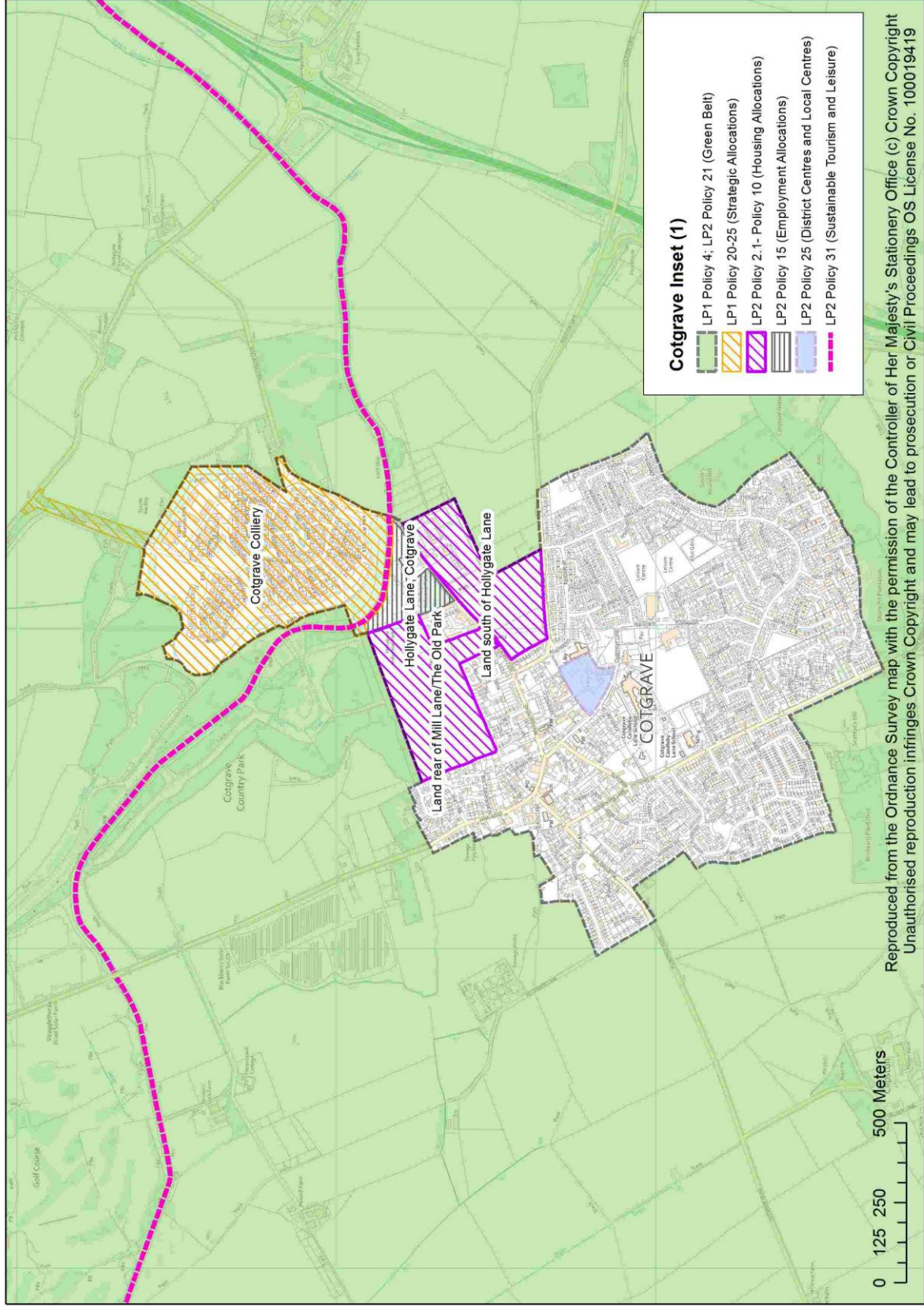
Reproduced from the Ordnance Survey map with the permission of the Controller of Her Majesty's Stationery Office (c). Crown Copyright
 Unauthorised reproduction infringes Crown Copyright and may lead to prosecution or Civil Proceedings OS License No. 100019419

Warner's Pad dock, Bingham



Reproduced from the Ordnance Survey map with the permission of the Controller of Her Majesty's Stationery Office (c) Crown Copyright
 Unauthorised reproduction infringes Crown Copyright and may lead to prosecution or Civil Proceedings OS License No. 100019419



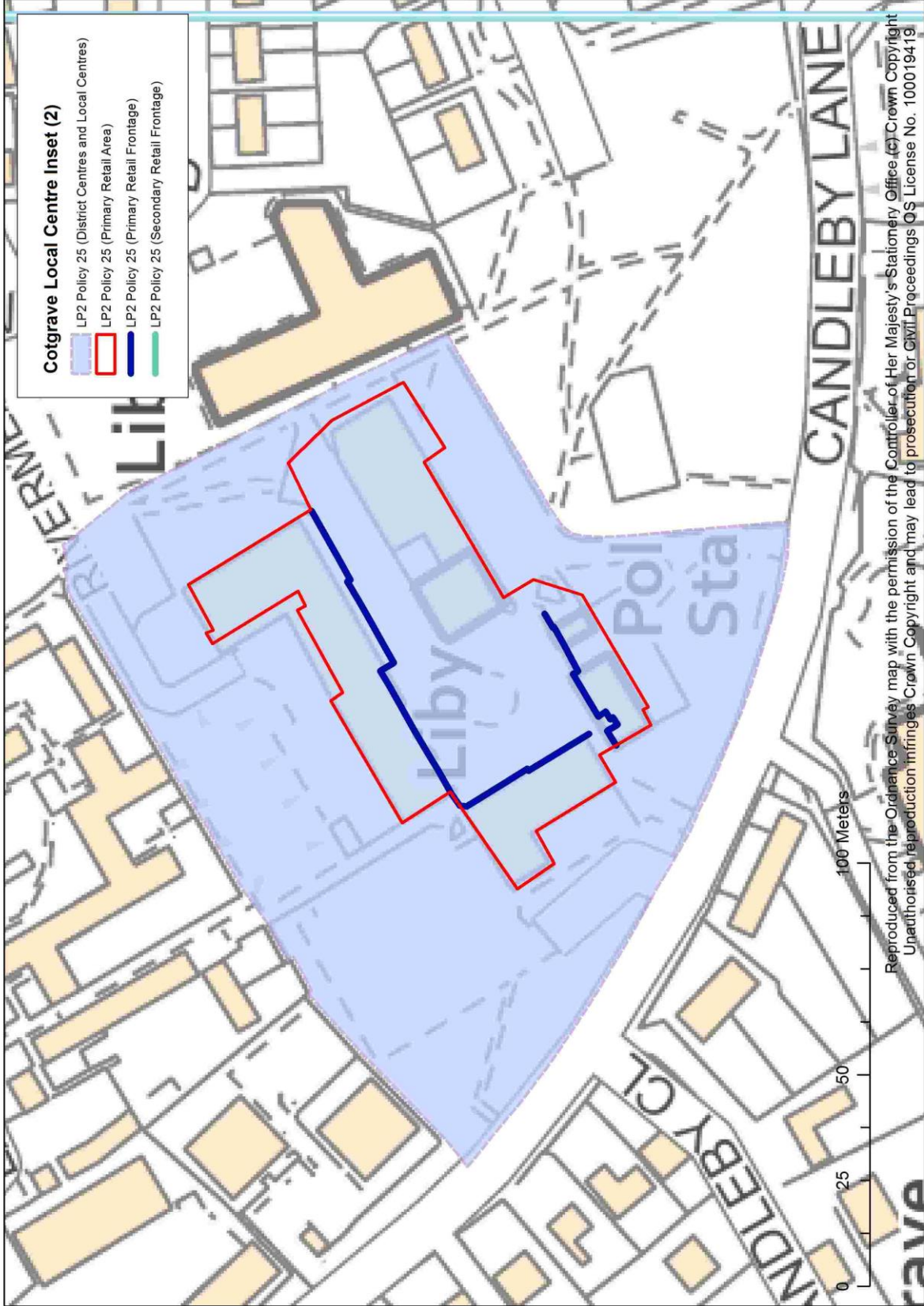


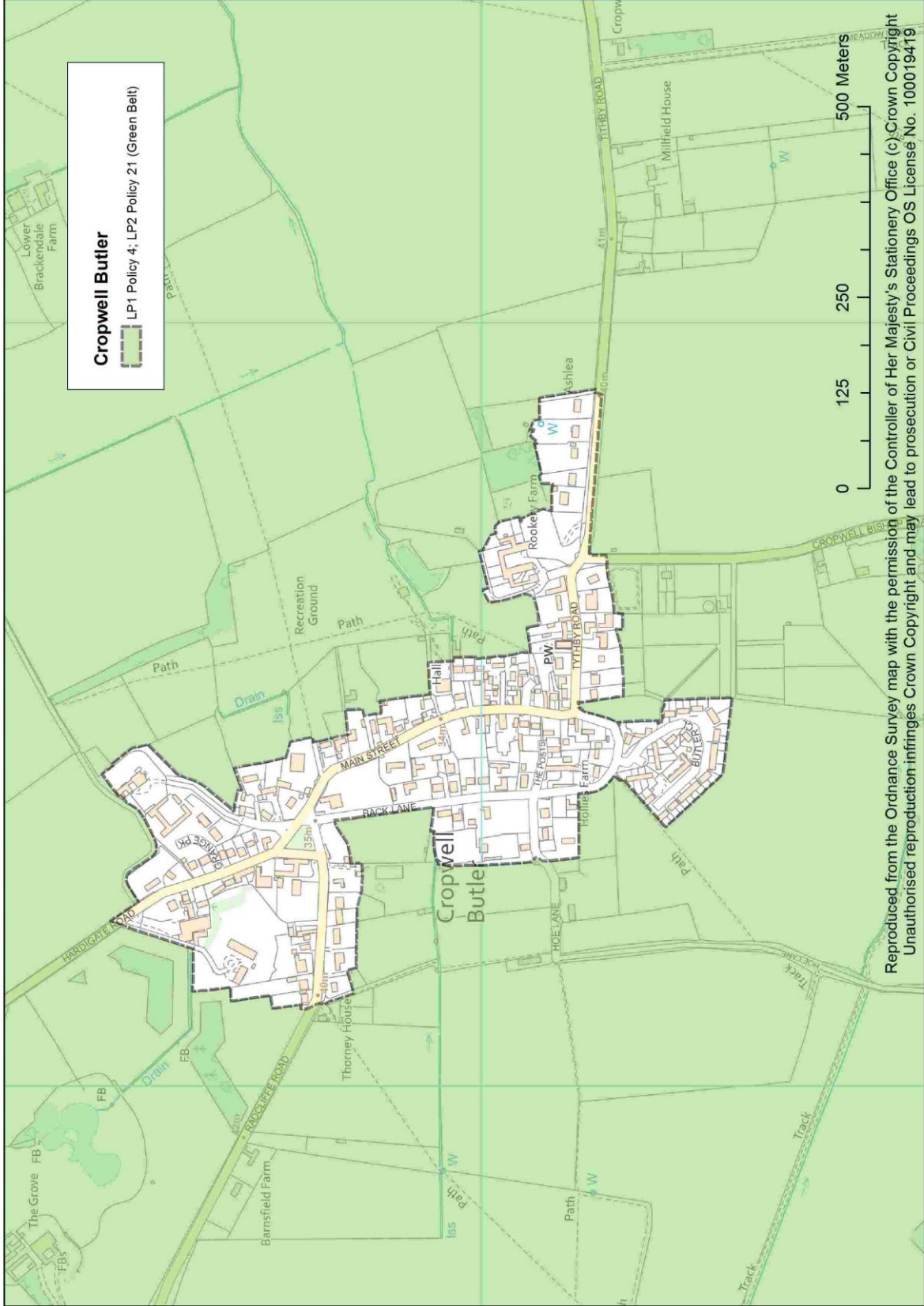
Cotgrave Inset (1)

- LP1 Policy 4; LP2 Policy 21 (Green Belt)
- LP1 Policy 20-25 (Strategic Allocations)
- LP2 Policy 2.1 - Policy 10 (Housing Allocations)
- LP2 Policy 15 (Employment Allocations)
- LP2 Policy 25 (District Centres and Local Centres)
- LP2 Policy 31 (Sustainable Tourism and Leisure)

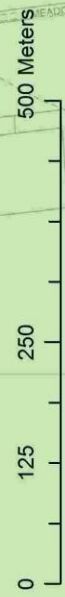
0 125 250 500 Meters

Reproduced from the Ordnance Survey map with the permission of the Controller of Her Majesty's Stationery Office (c) Crown Copyright
 Unauthorised reproduction infringes Crown Copyright and may lead to prosecution or Civil Proceedings OS License No. 100019419

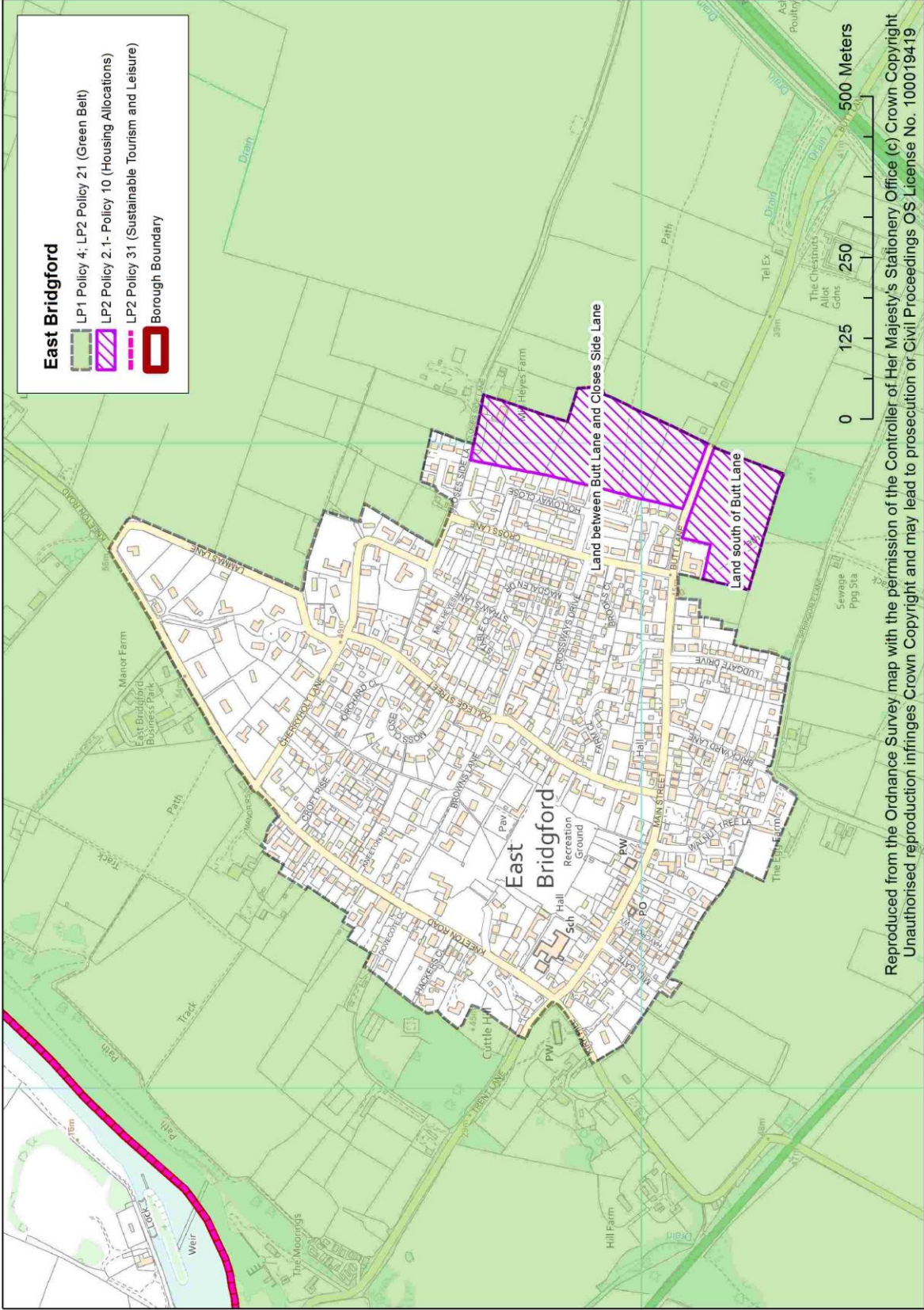




Cropwell Butler
 LP1 Policy 4; LP2 Policy 21 (Green Belt)



Reproduced from the Ordnance Survey map with the permission of the Controller of Her Majesty's Stationery Office (c) Crown Copyright
 Unauthorised reproduction infringes Crown Copyright and may lead to prosecution or Civil Proceedings OS License No. 100019419

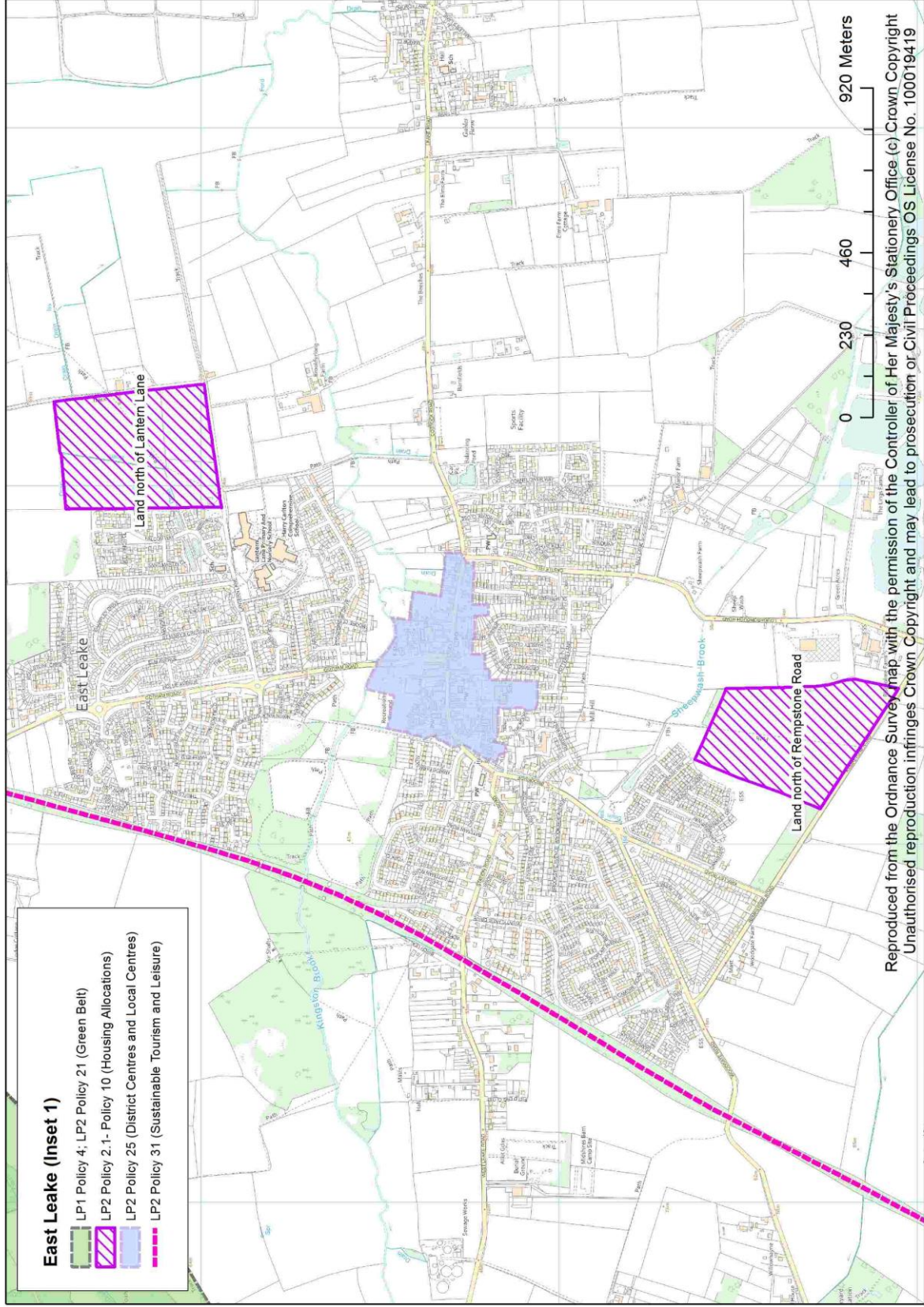


East Bridgford

- LP1 Policy 4; LP2 Policy 21 (Green Belt)
- LP2 Policy 2.1 - Policy 10 (Housing Allocations)
- LP2 Policy 31 (Sustainable Tourism and Leisure)
- Borough Boundary



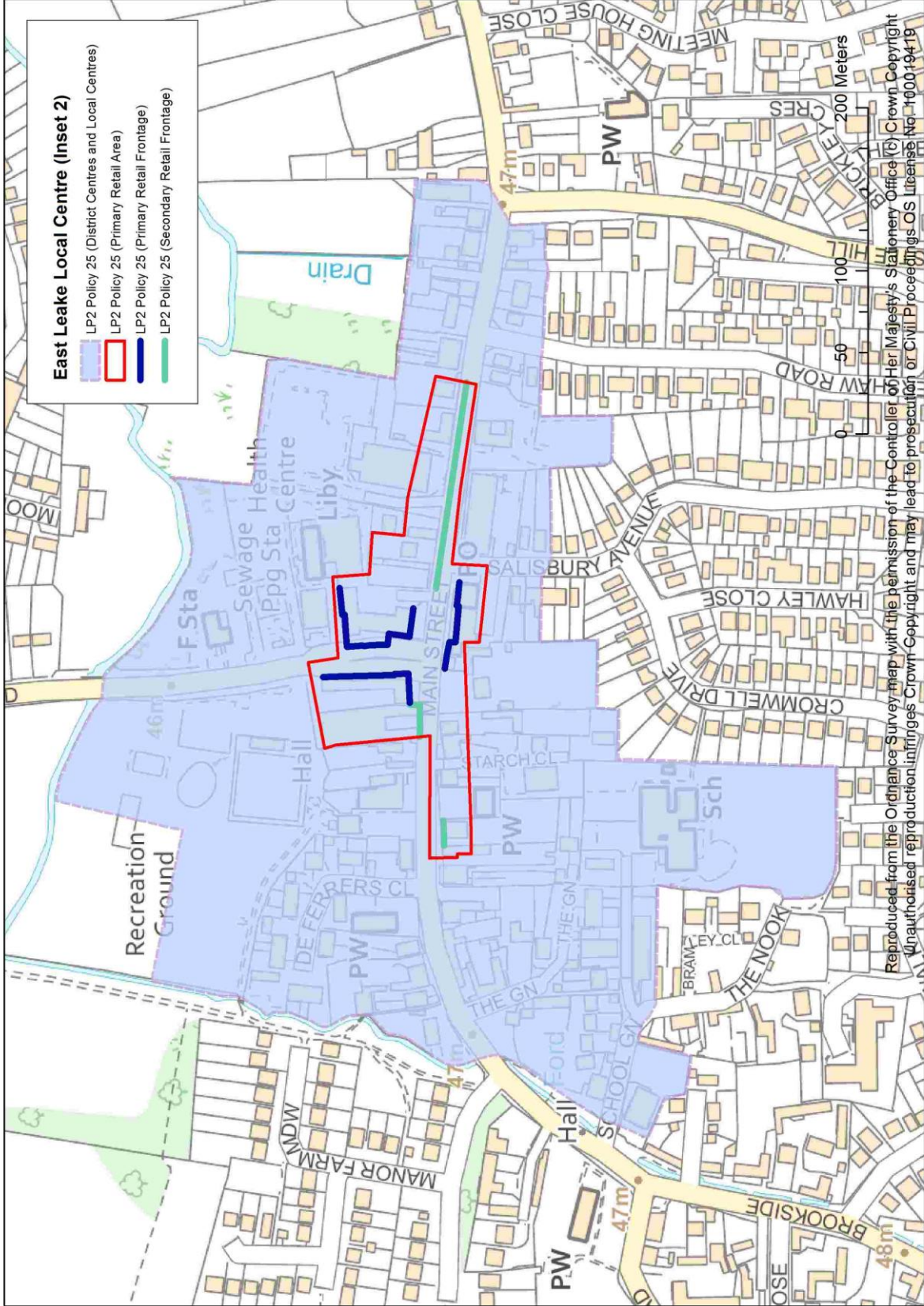
Reproduced from the Ordnance Survey map with the permission of the Controller of Her Majesty's Stationery Office (c) Crown Copyright
 Unauthorised reproduction infringes Crown Copyright and may lead to prosecution or Civil Proceedings OS License No. 100019419



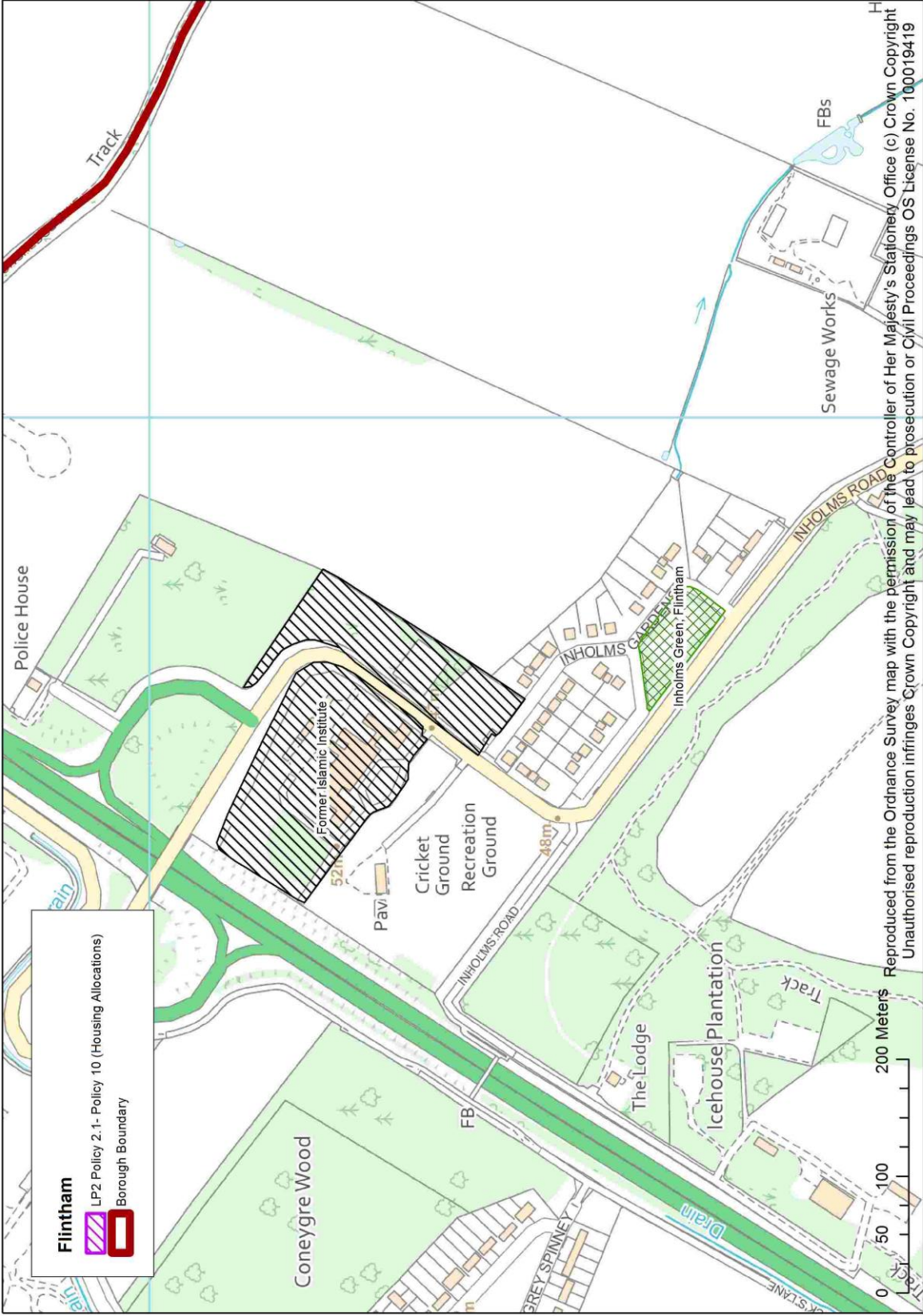
East Leake (Inset 1)

- LP1 Policy 4; LP2 Policy 21 (Green Belt)
- LP2 Policy 2.1 - Policy 10 (Housing Allocations)
- LP2 Policy 25 (District Centres and Local Centres)
- LP2 Policy 31 (Sustainable Tourism and Leisure)

Reproduced from the Ordnance Survey map with the permission of the Controller of Her Majesty's Stationery Office (c) Crown Copyright
 Unauthorised reproduction infringes Crown Copyright and may lead to prosecution or Civil Proceedings OS License No. 100019419



Reproduced from the Ordnance Survey map with the permission of the Controller of Her Majesty's Stationery Office (C) Crown Copyright
 Unauthorised reproduction infringes Crown Copyright and may lead to prosecution or Civil Proceedings OS License No. 100019419

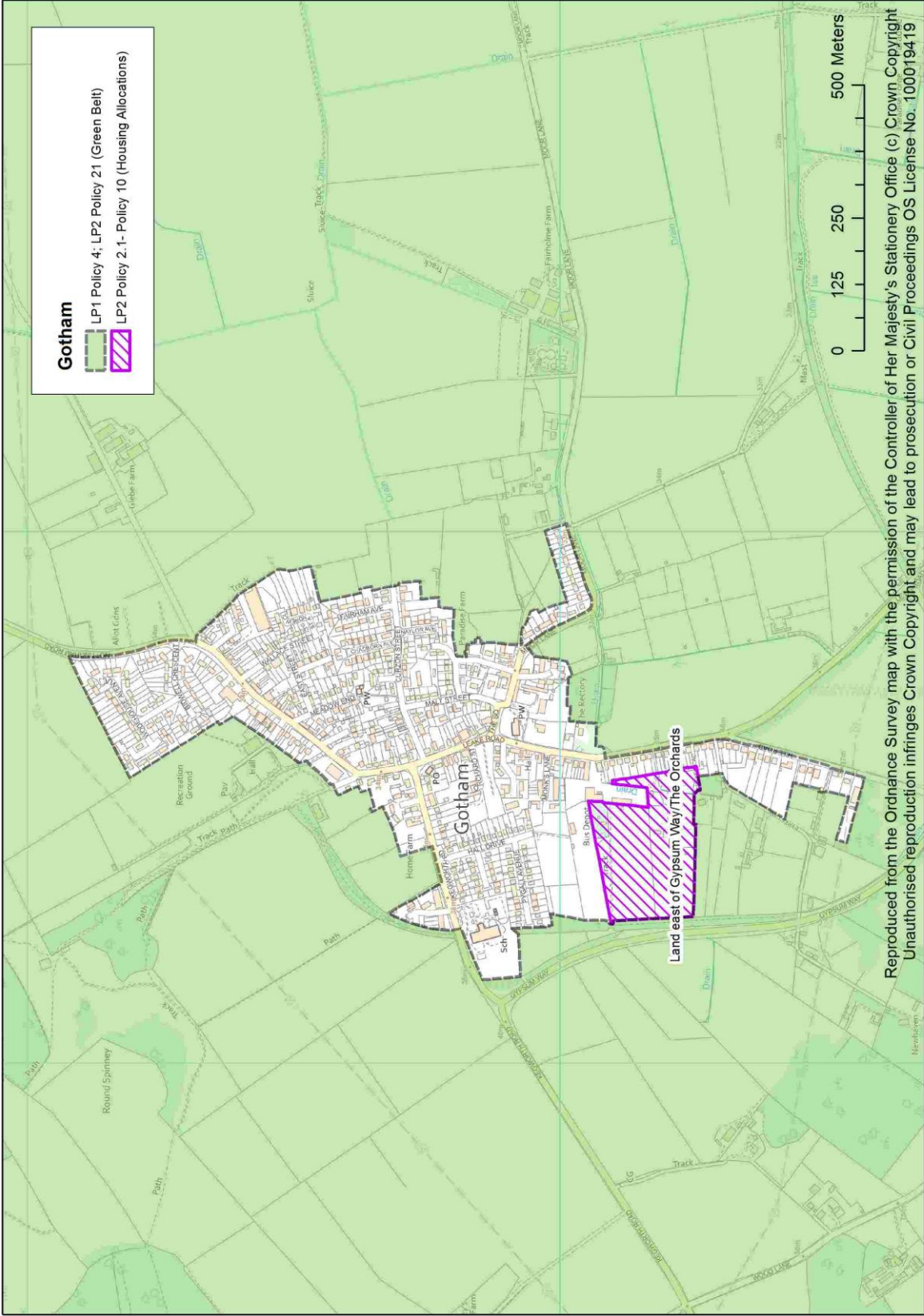


Flintham

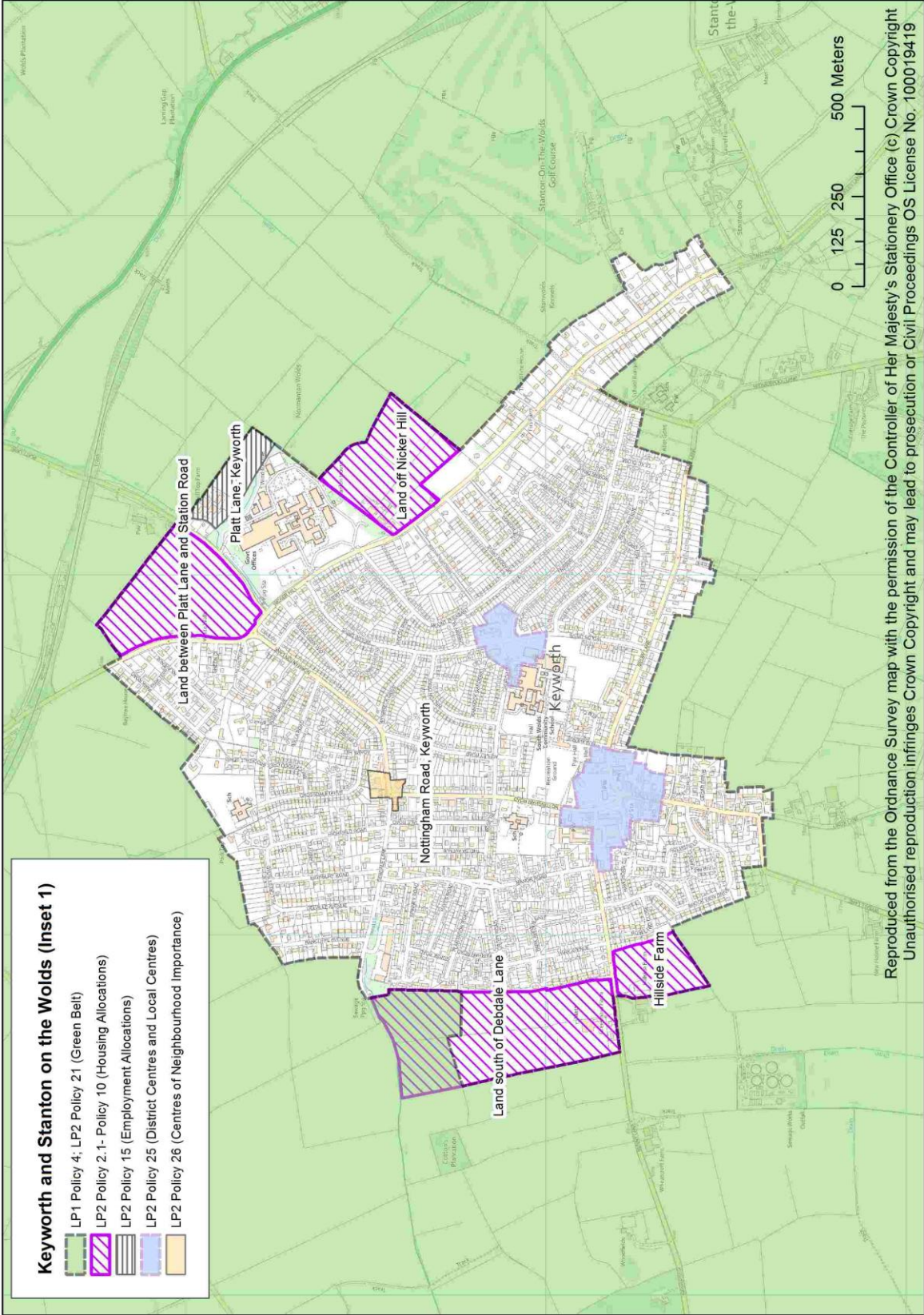
LP2 Policy 2.1 - Policy 10 (Housing Allocations)

Borough Boundary

Reproduced from the Ordnance Survey map with the permission of the Controller of Her Majesty's Stationery Office (c) Crown Copyright
 Unauthorised reproduction infringes Crown Copyright and may lead to prosecution or Civil Proceedings OS License No. 100019419



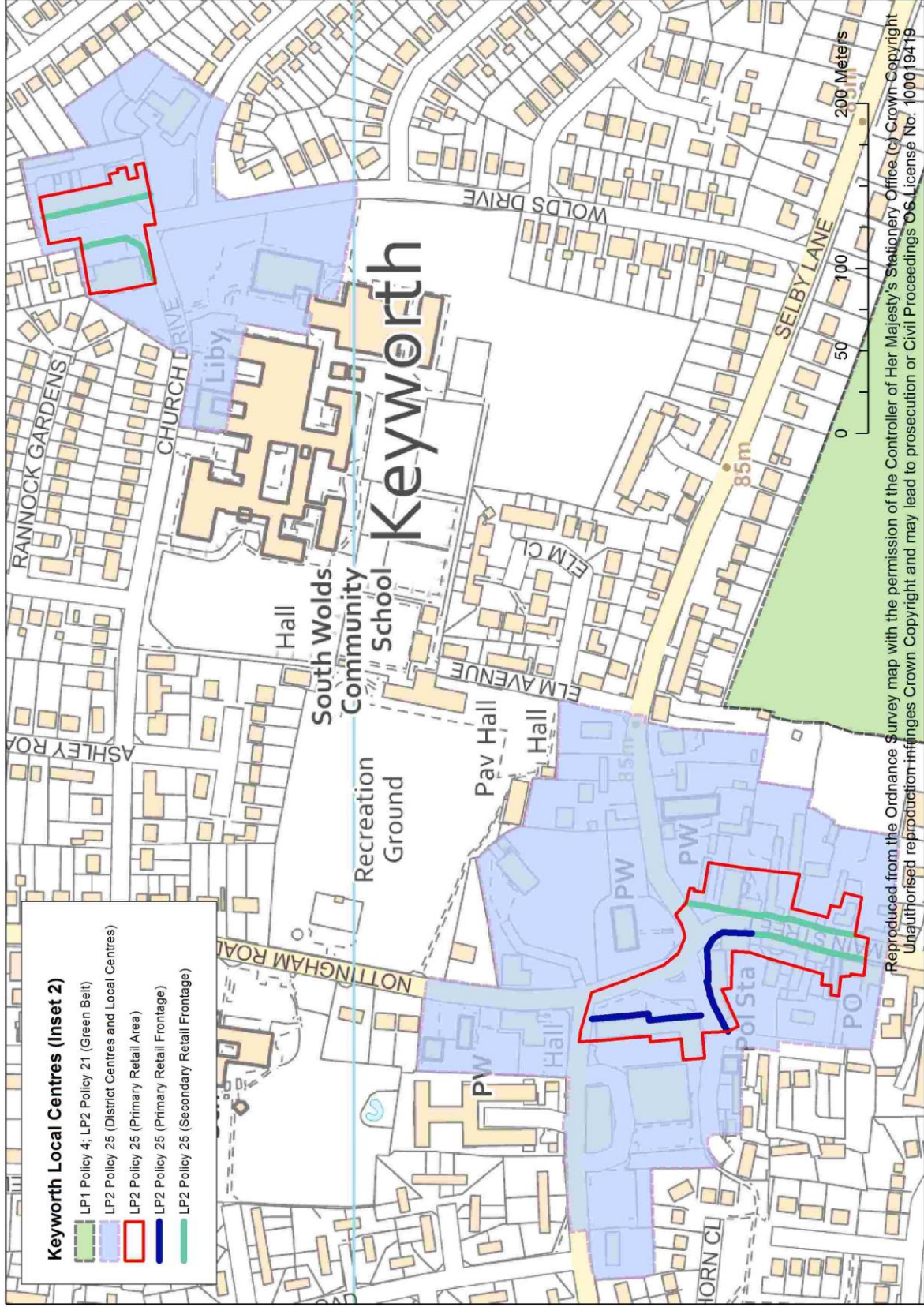
Reproduced from the Ordnance Survey map with the permission of the Controller of Her Majesty's Stationery Office (c) Crown Copyright
 Unauthorised reproduction infringes Crown Copyright and may lead to prosecution or Civil Proceedings OS License No. 100019419



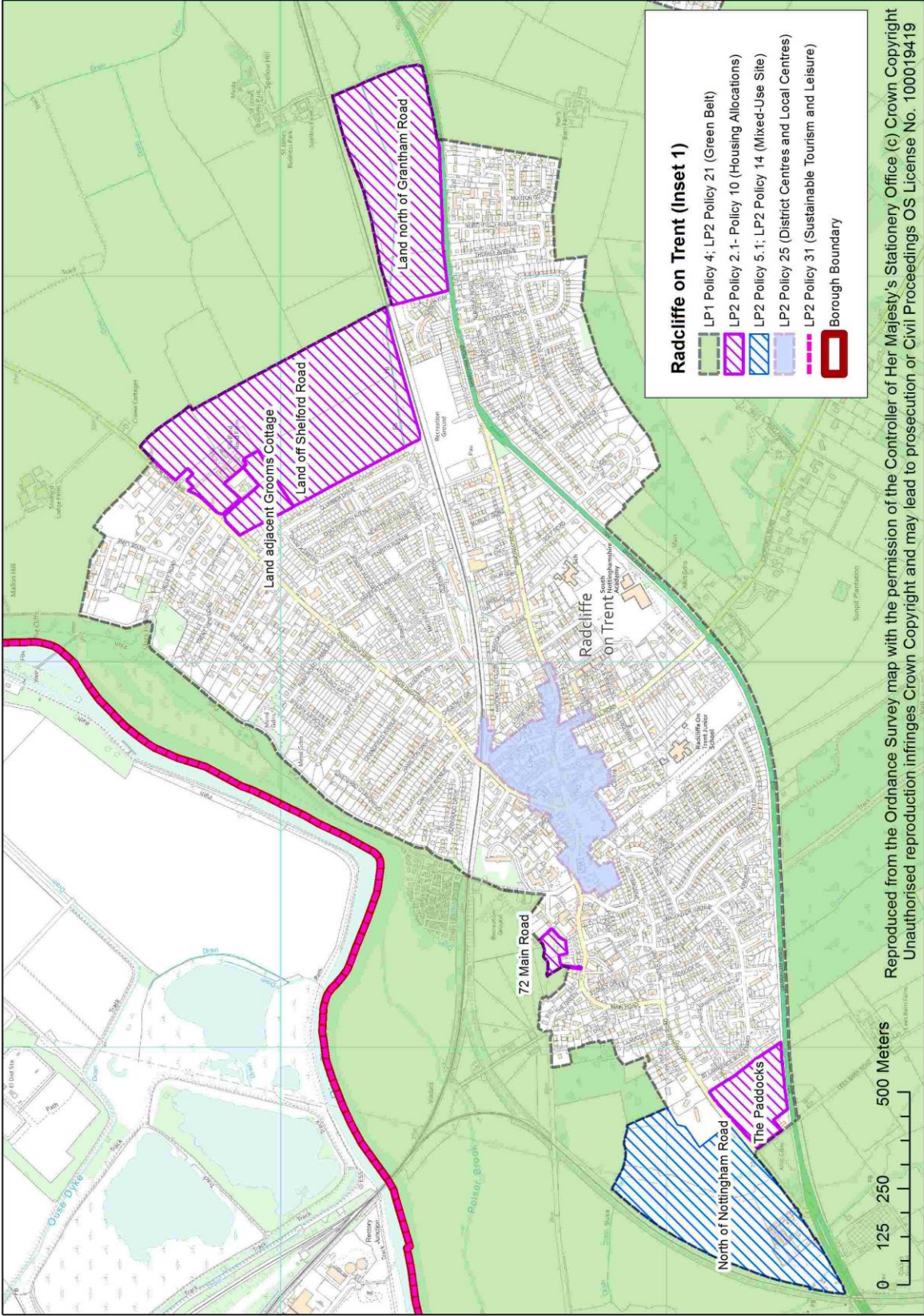
Keyworth and Stanton on the Wolds (Inset 1)

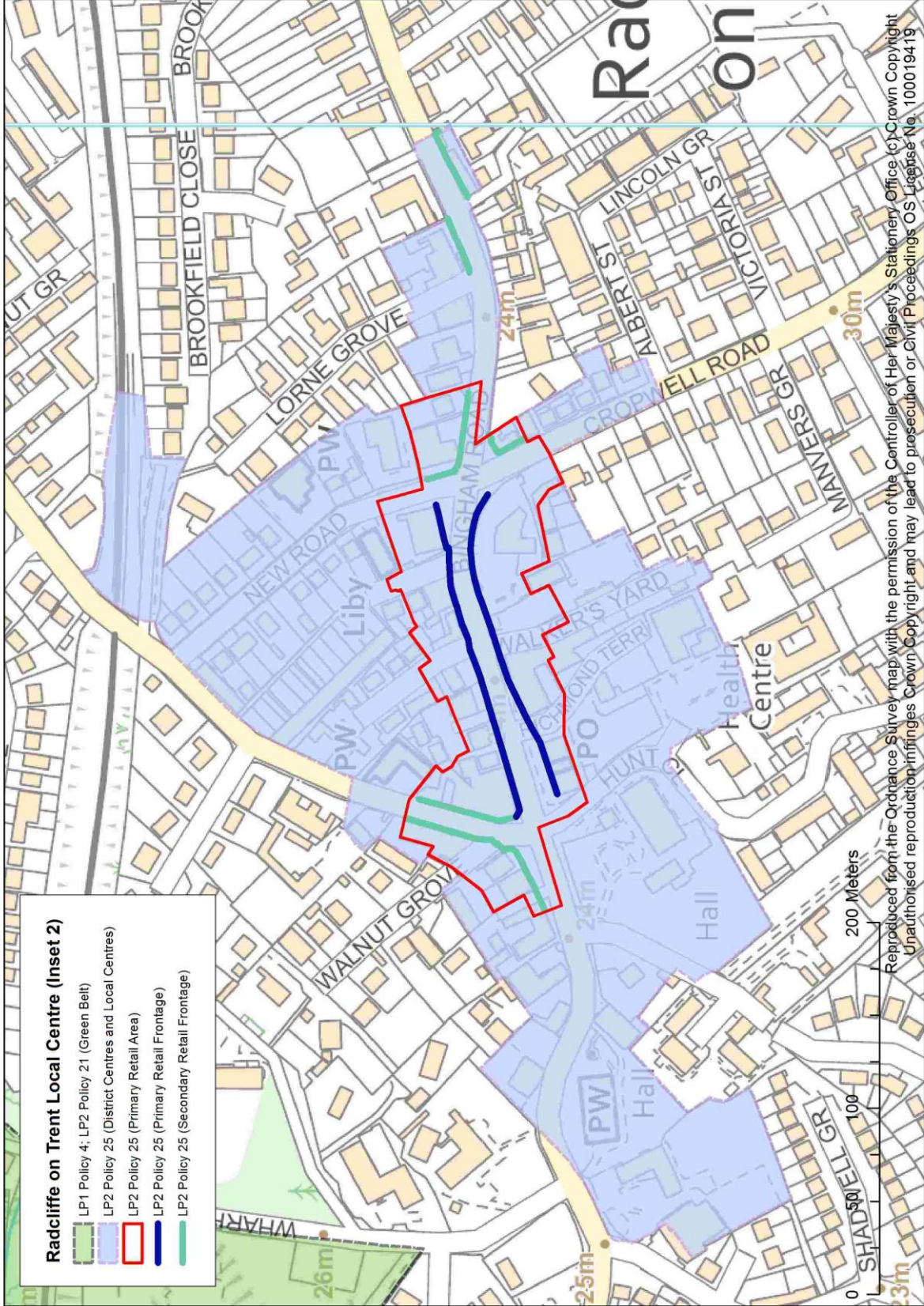
- LP1 Policy 4; LP2 Policy 21 (Green Belt)
- LP2 Policy 2.1- Policy 10 (Housing Allocations)
- LP2 Policy 15 (Employment Allocations)
- LP2 Policy 25 (District Centres and Local Centres)
- LP2 Policy 26 (Centres of Neighbourhood importance)

Reproduced from the Ordnance Survey map with the permission of the Controller of Her Majesty's Stationery Office (c) Crown Copyright
 Unauthorised reproduction infringes Crown Copyright and may lead to prosecution or Civil Proceedings OS License No. 100019419



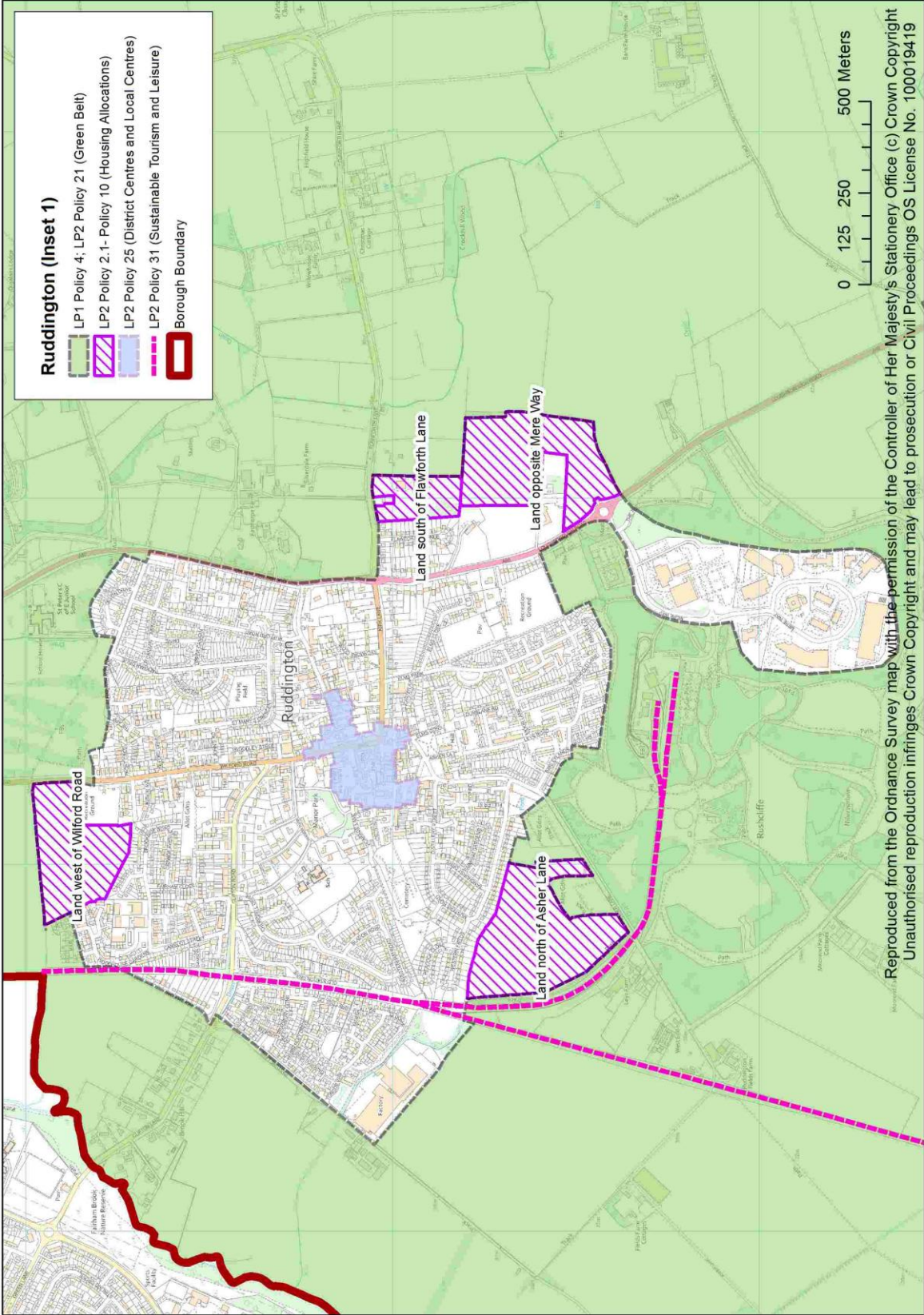
Reproduced from the Ordnance Survey map with the permission of the Controller of the Stationery Office (c) Crown Copyright
 Unauthorised reproduction infringes Crown Copyright and may lead to prosecution or Civil Proceedings OS License No. 100019419



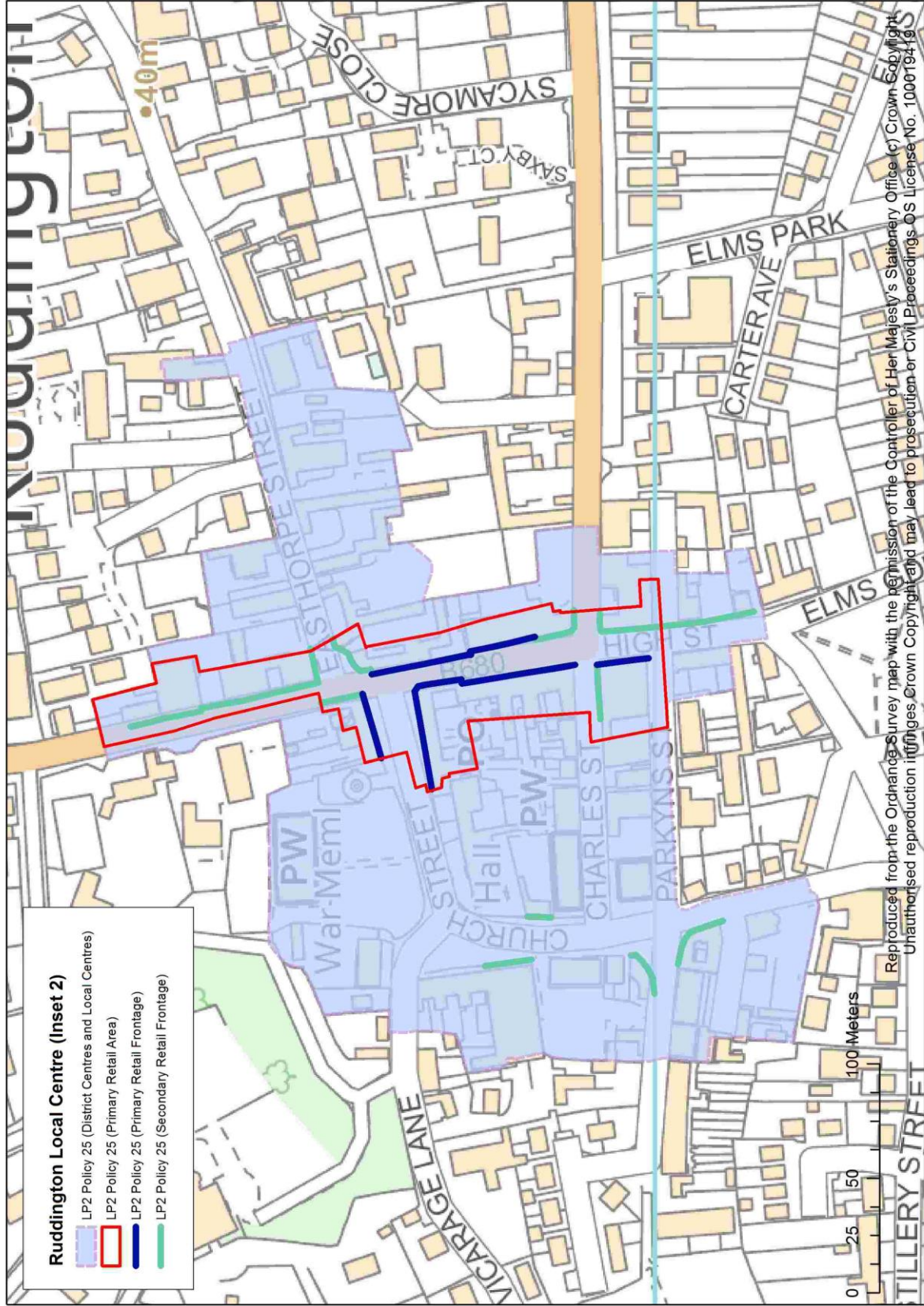


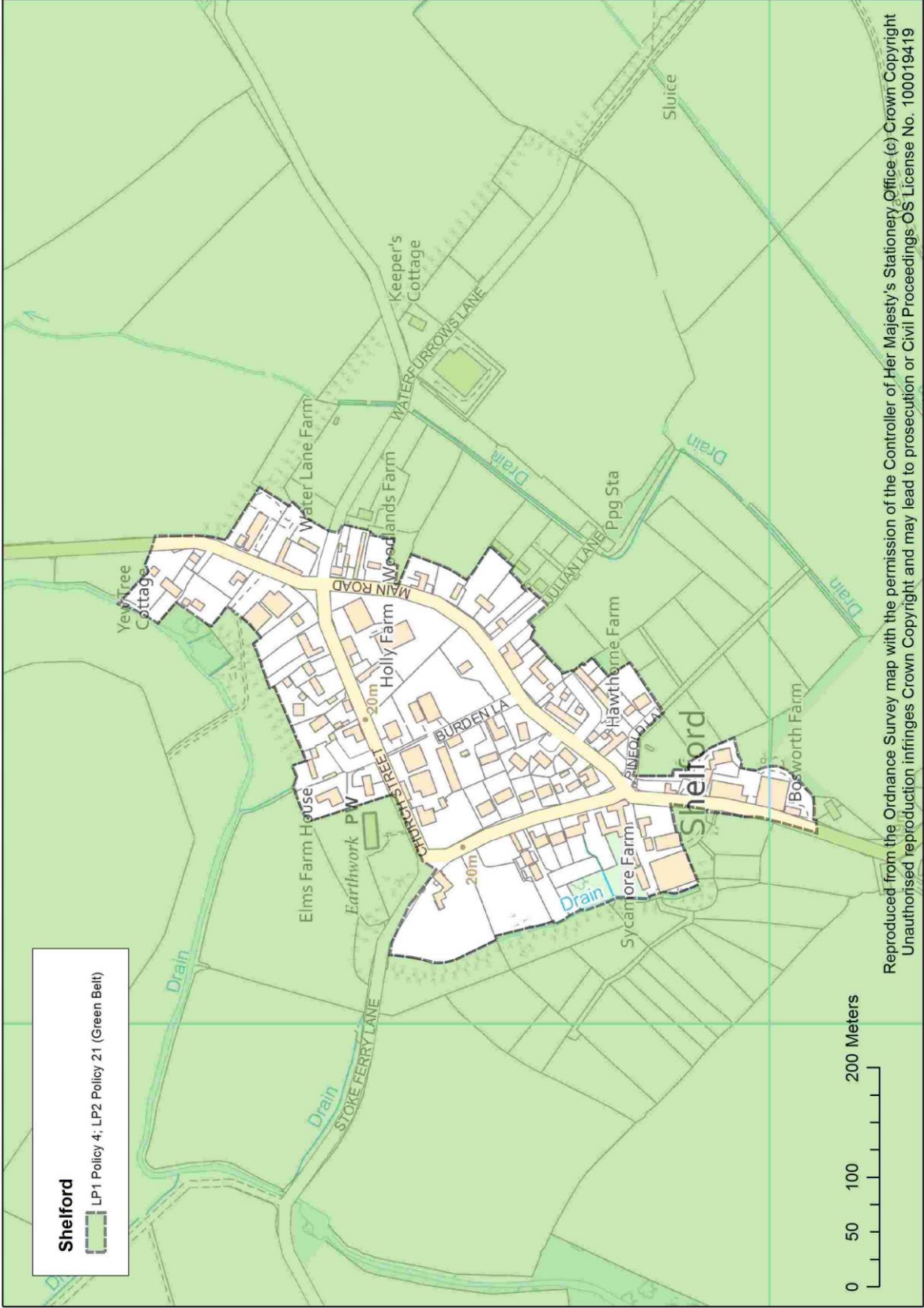
- Radcliffe on Trent Local Centre (Inset 2)**
- LP1 Policy 4; LP2 Policy 21 (Green Belt)
 - LP2 Policy 25 (District Centres and Local Centres)
 - LP2 Policy 25 (Primary Retail Area)
 - LP2 Policy 25 (Primary Retail Frontage)
 - LP2 Policy 25 (Secondary Retail Frontage)

Reproduced from the Ordnance Survey map with the permission of the Controller of Her Majesty's Stationery Office (c) Crown Copyright
 Unauthorised reproduction infringes Crown Copyright and may lead to prosecution or Civil Proceedings OS License No. 100019419

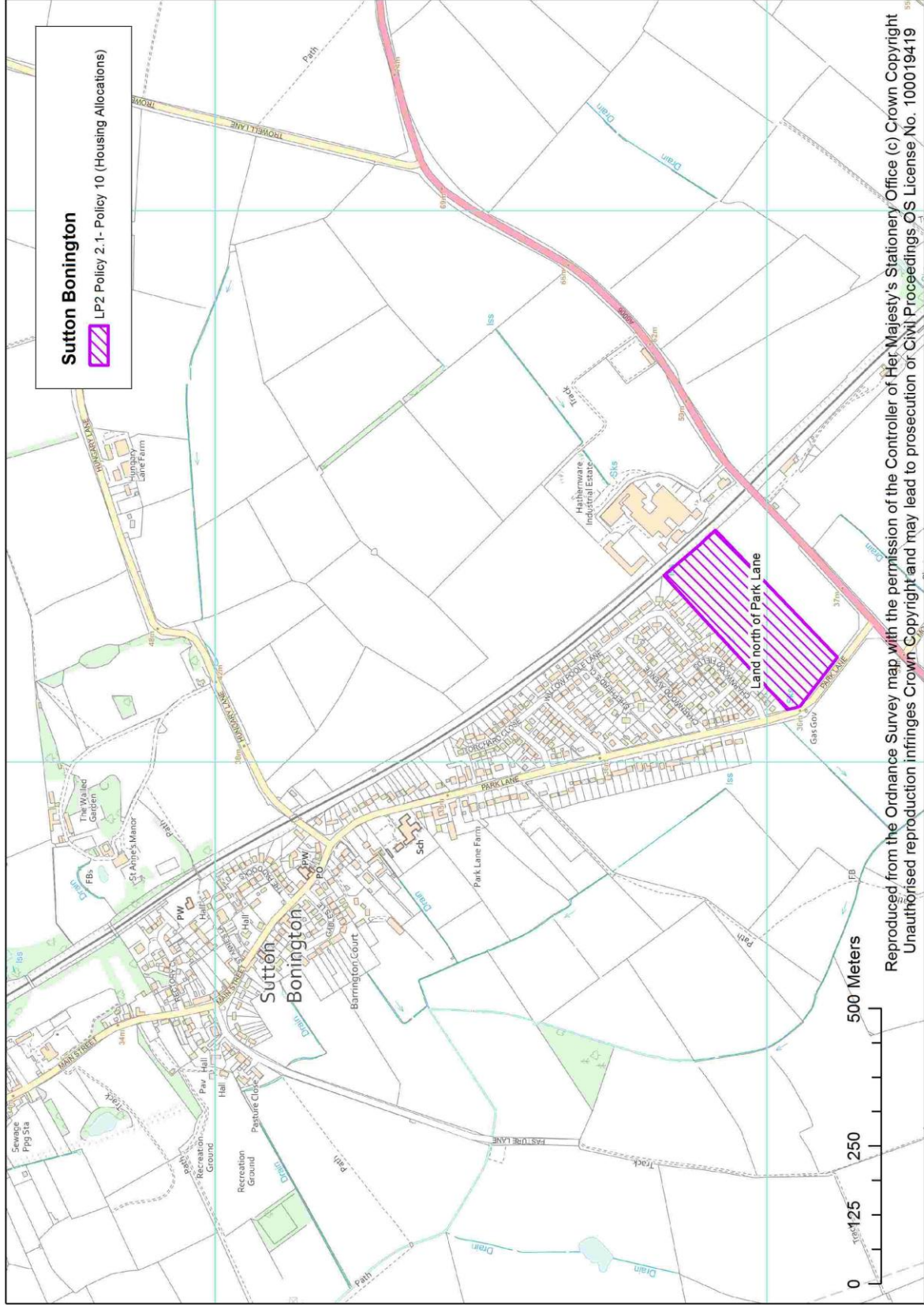


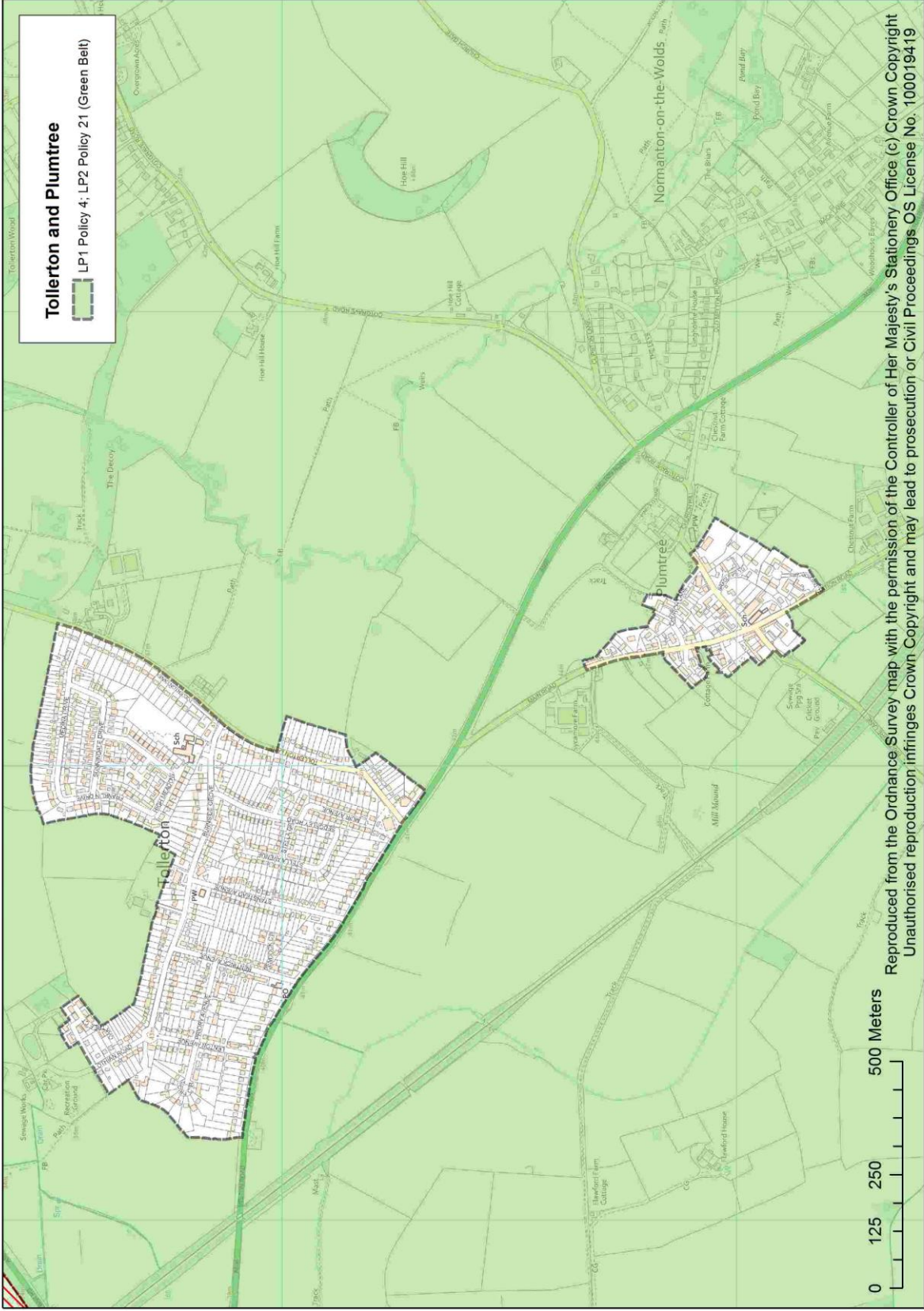
Reproduced from the Ordnance Survey map with the permission of the Controller of Her Majesty's Stationery Office (c) Crown Copyright
 Unauthorised reproduction infringes Crown Copyright and may lead to prosecution or Civil Proceedings OS License No. 100019419

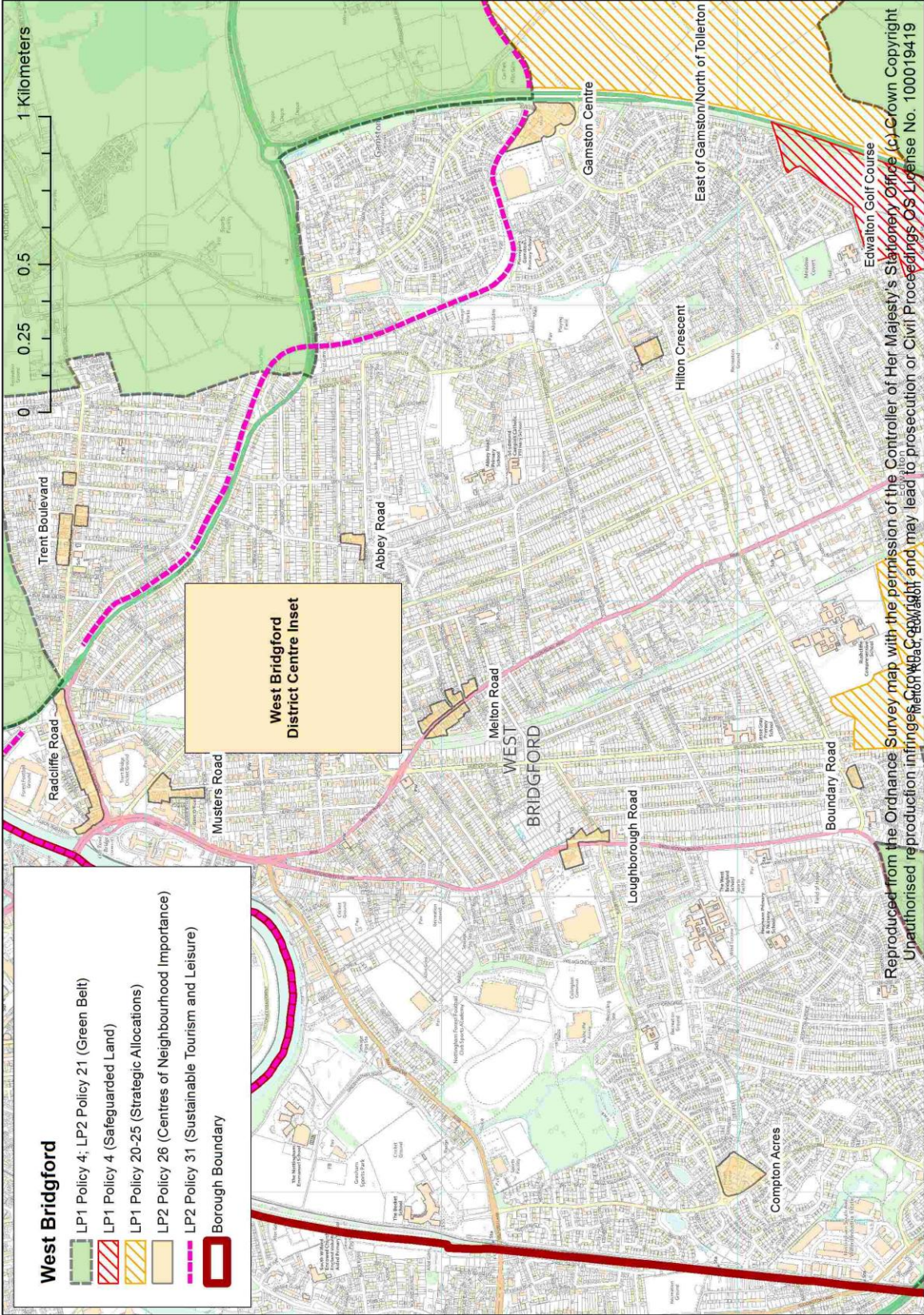




Reproduced from the Ordnance Survey map with the permission of the Controller of Her Majesty's Stationery Office (c) Crown Copyright
 Unauthorised reproduction infringes Crown Copyright and may lead to prosecution or Civil Proceedings OS License No. 100019419







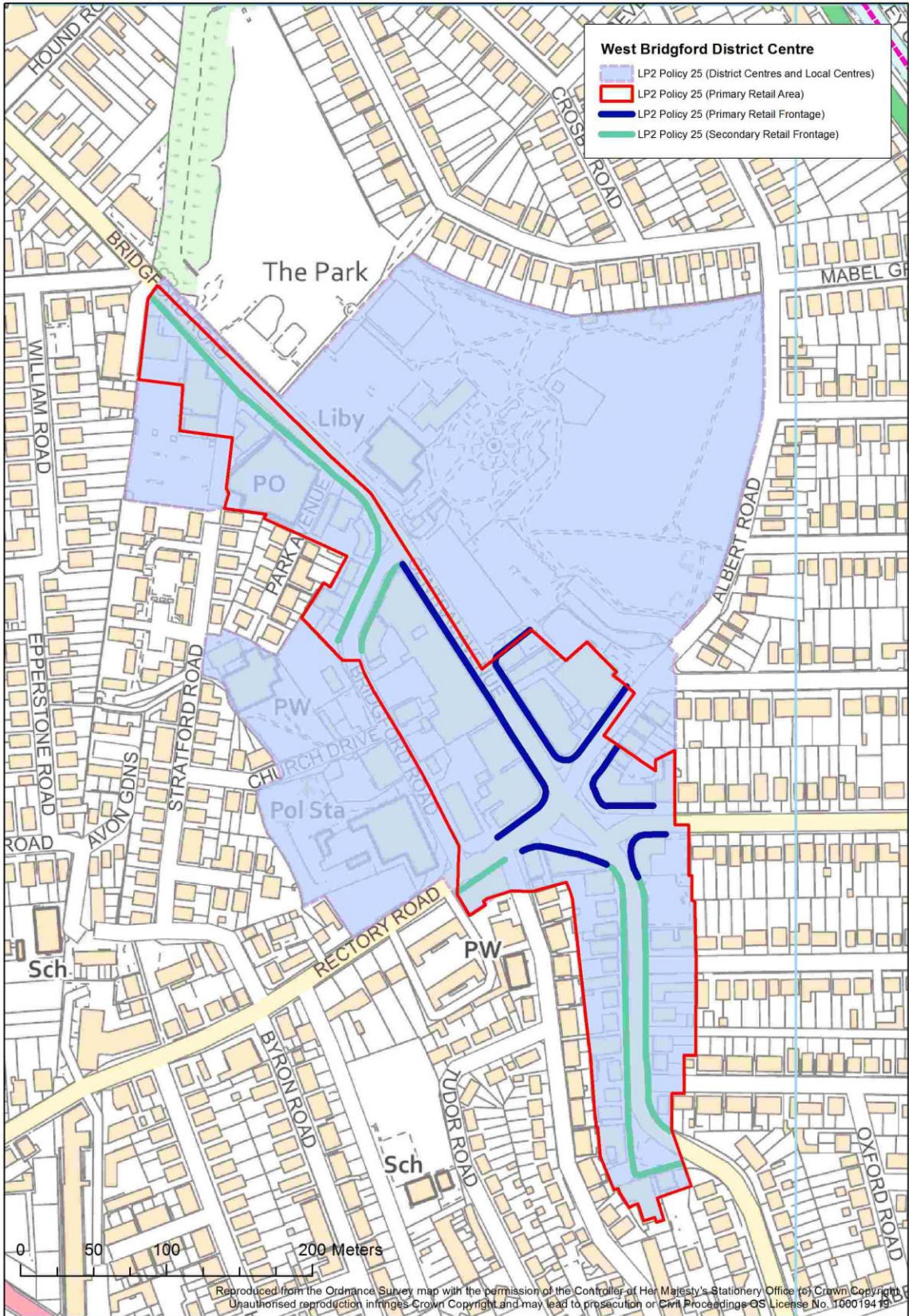
West Bridgford

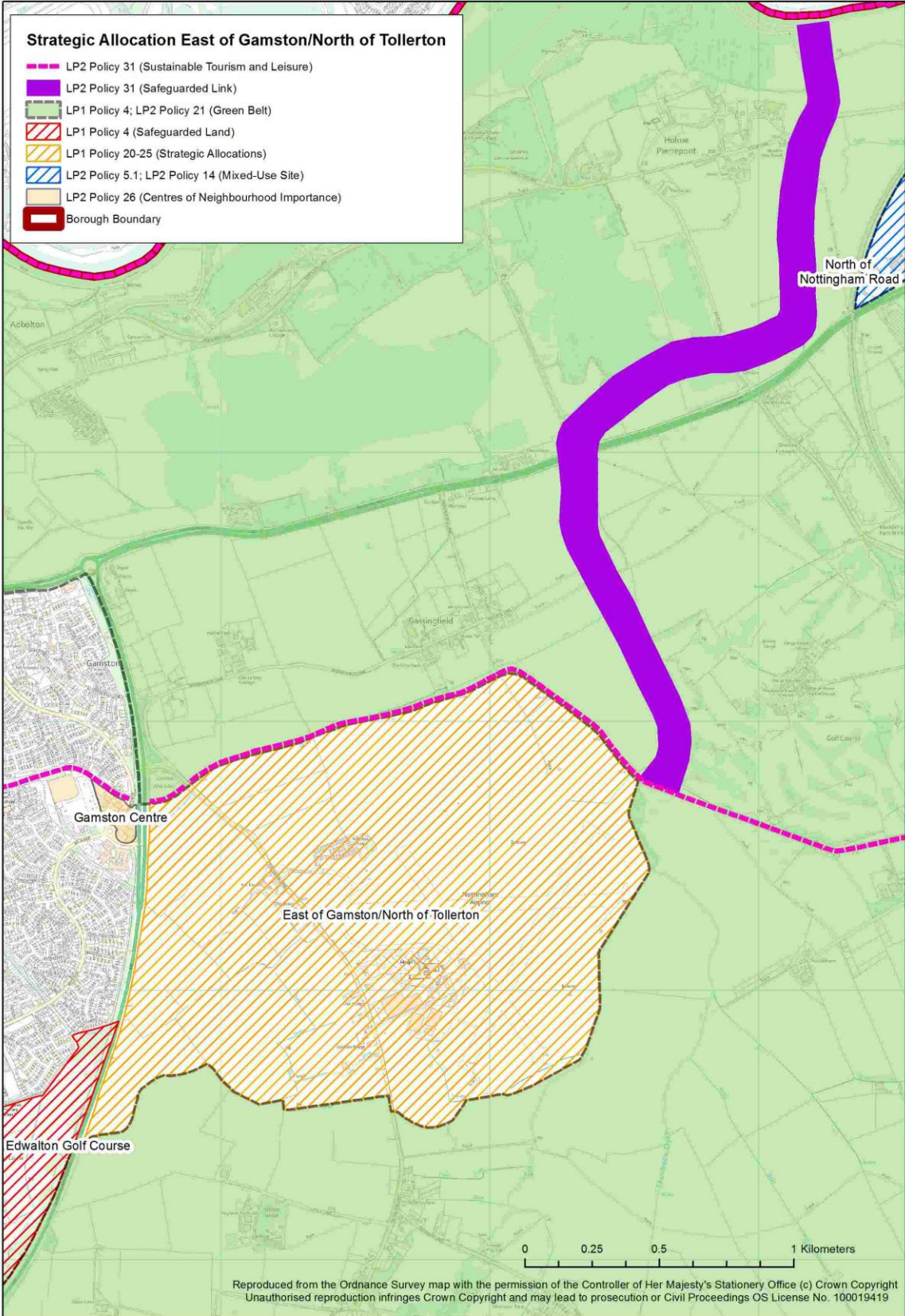
- LP1 Policy 4; LP2 Policy 21 (Green Belt)
- LP1 Policy 4 (Safeguarded Land)
- LP1 Policy 20-25 (Strategic Allocations)
- LP2 Policy 26 (Centres of Neighbourhood Importance)
- LP2 Policy 31 (Sustainable Tourism and Leisure)
- Borough Boundary

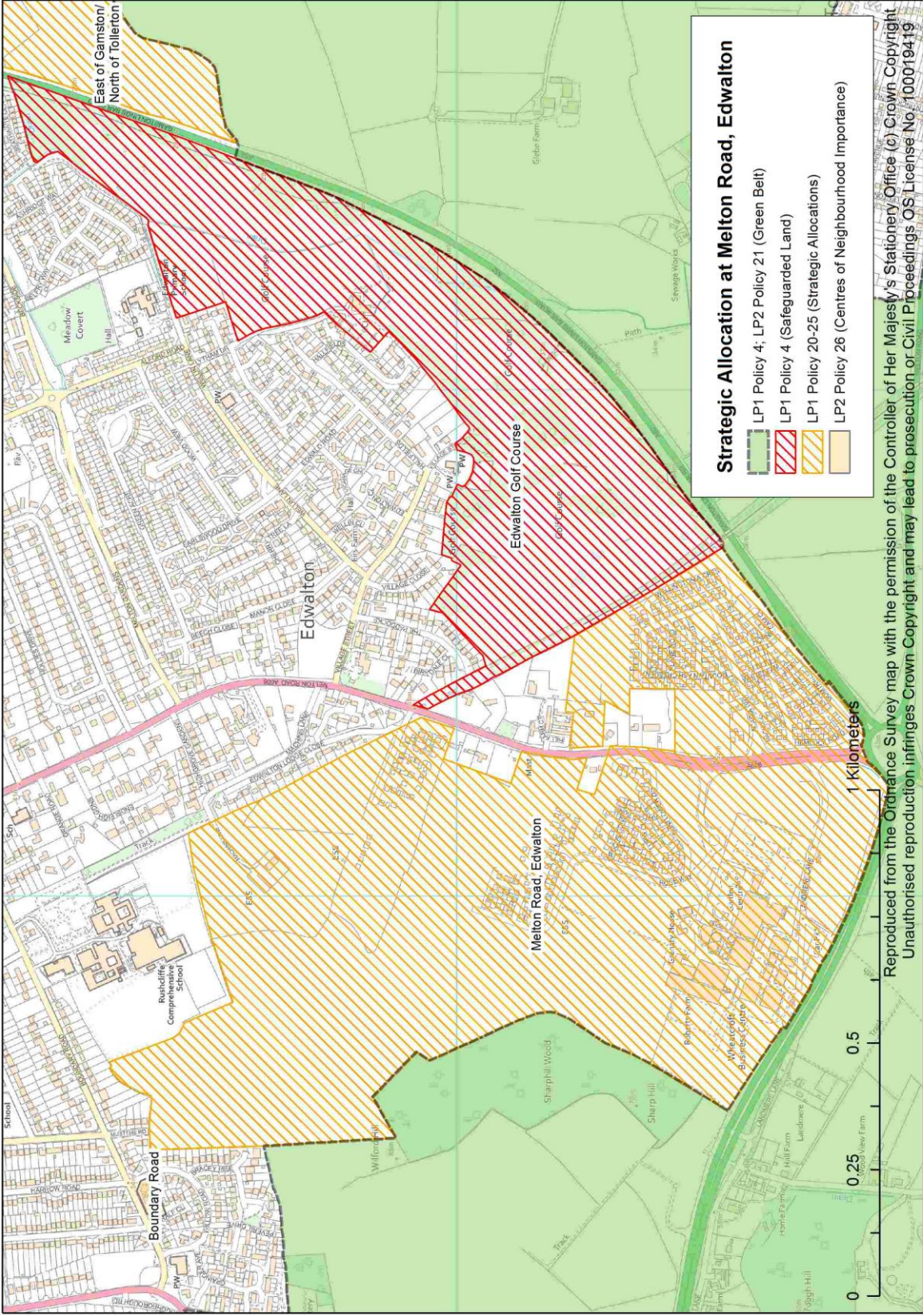
West Bridgford District Centre Inset



Reproduced from the Ordnance Survey map with the permission of the Controller of Her Majesty's Stationery Office. Crown Copyright. Unauthorised reproduction infringes copyright and may lead to prosecution or civil proceedings. OS License No. 100019419



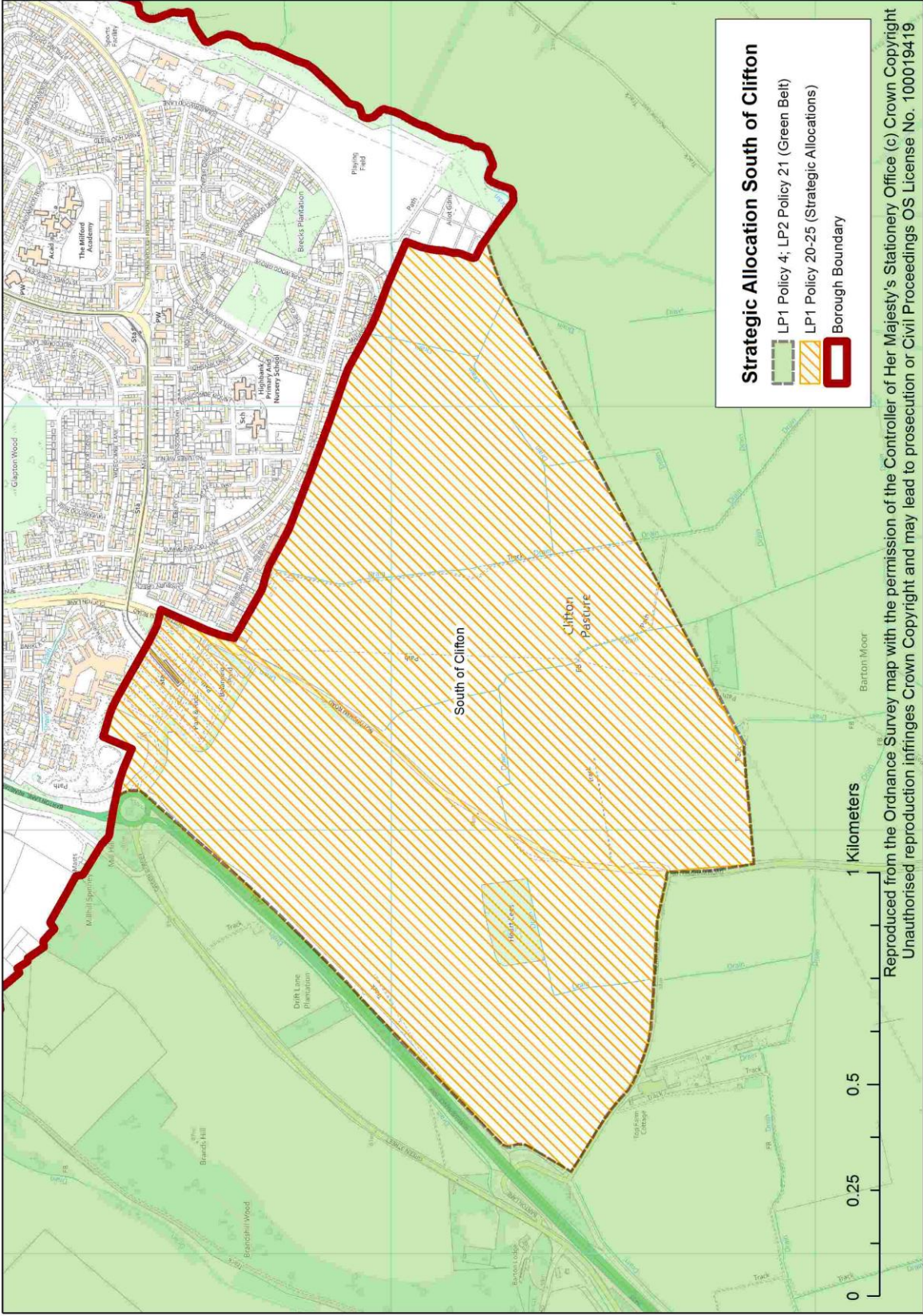







Strategic Allocation at Melton Road, Edwalton

- LP1 Policy 4; LP2 Policy 21 (Green Belt)
- LP1 Policy 4 (Safeguarded Land)
- LP1 Policy 20-25 (Strategic Allocations)
- LP2 Policy 26 (Centres of Neighbourhood Importance)

Reproduced from the Ordnance Survey map with the permission of the Controller of Her Majesty's Stationery Office (c) Crown Copyright
 Unauthorised reproduction infringes Crown Copyright and may lead to prosecution or Civil Proceedings OS License No. 100019419



Strategic Allocation South of Clifton

-  LP1 Policy 4; LP2 Policy 21 (Green Belt)
-  LP1 Policy 20-25 (Strategic Allocations)
-  Borough Boundary

0 0.25 0.5 1 Kilometers

Reproduced from the Ordnance Survey map with the permission of the Controller of Her Majesty's Stationery Office (c) Crown Copyright
 Unauthorised reproduction infringes Crown Copyright and may lead to prosecution or Civil Proceedings OS License No. 100019419

